

**LYNCH
CREEK
FARM**

MEETING, DINING & EVENT VENUE

Lynch Creek Farm NEWS

MEETING • DINING • EVENT VENUE
BEN FRANKLIN SOCIETY HEADQUARTERS

ON THE WEB: "WWW.LYNCHCREEK.COM" AND "WWW.BENFRANKLINSOCIETYNC.ORG"
ON FACEBOOK AS: "LYNCH CREEK FARM" AND "BEN FRANKLIN SOCIETY"

EVENT CALENDAR

SEPT 2019

1973 ROCKY FORD ROAD
KITRELL, NC 27544
CALL/TEXT 252-767-1167

SEPT 12TH - BAKERY PICK-UP DAY - THURSDAY

ORDER ONLINE NOW AT WWW.LYNCHCREEK.COM/STORE

PRODUCT OF THE MONTH - THE KUMMELWECK STORY (SEE PAGE-3)



SEPT 17TH - CABIN BOOK & MEDIA CLUB AT 3:30PM - TUESDAY

"THE ISLAND OF SEA WOMEN" BY LISA SEE (SEE PAGE-2)



SEPT 21ST - TOMATO PIE BUFFET WITH MUSIC AT 5:00PM - SATURDAY

OUTDOORS ON THE CABIN GROUNDS WITH LIVE FRONT PORCH MUSIC



DryBread Road
Rick & Betty Newsome

Bob's Famous Wood-fired Oven

TOMATO PIE

with Sausage, Mushrooms and Spinach
Salad - Dips - Sweet Tea - Water

MUSIC BY DRYBREAD ROAD

RICK & BETTE NEWSOME

BYOB - \$20 per person

RESERVATIONS REQUIRED - RAIN OR SHINE



BOB'S WOOD-FIRED OVEN
TOMATO PIE
FUND-RAISING EVENT

SEPT 29TH - SUNDAY BRUNCH IS BACK AT 1:00PM

FRUIT/MUFFINS - SOFT SCRAMBLED EGGS - SAUSAGE/POTATO/BREADS - SORBET/COOKIE

BRING ALONG A GUEST - SHARE A MEMORY TOGETHER

SPECIAL \$15 PER PERSON - BYOB - RESERVATIONS REQUIRED



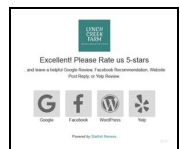
Fund-Raising Event



PLEASE WRITE A SOCIAL MEDIA ONLINE REVIEW

SUPPORT OUR NEW "STARFISH-REVIEW" INITIATIVE

(SEE PAGE-2 AND PAGE-5 FOR MORE DETAILS)



RESERVATIONS & MEMBERSHIP REQUIRED (EXCEPT FOR BAKERY ORDERS)

INDOOR EVENTS - PAY WHEN YOU DEPART
OUTDOOR EVENTS - PRE-PAY ONLINE

PAYMENT ACCEPTED BY CASH, CHECK OR CREDIT CARD

PLAN TO HOLD A PRIVATE EVENT HERE

EMAIL BOB@LYNCHCREEK.COM
OR CALL 252-767-1167

SEPTEMBER 2019

Sun	Mon	Tue	Wed	Thu	Fri	Sat
1	2	3	4	5	6	7
8	9	10	11	BK	13	14
15	16	BC	18	19	20	FE
22	23	24	25	26	27	28
FE	30					

BC Book-Club BK Bakery FE Fundraising-Event PE Private-Event



Lynch Creek Farm NEWS

CHARITABLE • TAX EXEMPT • NON-PROFIT • CORPORATION
WITH EDUCATIONAL, CULTURAL AND ECONOMIC DEVELOPMENT FOCUS

**BEN FRANKLIN SOCIETY
NEWS**

SEPT 2019

MISSION STATEMENT

To enhance the educational, cultural and economic development of Franklin County by leveraging its natural and historic resources

ANNUAL SOCIETY MEMBERSHIP DUES

GUEST \$2.50 INDIVIDUAL \$7.50
COUPLE \$15 FAMILY \$25
GROUP \$50 CORPORATION \$100+

“The Ben Franklin Society performs a collection of independent Research Projects”

“Society Members work on Projects either individually, or in collaboration with others”

“The Society meets yearly, while Projects maintain their own activity schedule”

“The Society provides funding, promotion and staffing assistance for all Projects”

“Project Leaders provide Status Reports that are included in our monthly Newsletter”

“Project Leaders are encouraged to utilize computer technology to assemble, communicate and publish their findings”

VISIT OUR NEW WEBSITES

Over the Labor Day Weekend, we migrated our Websites and Email to new hosting services

Both www.lynchcreek.com
and www.benfranklinsocietync.org

now sport a new Theme (look and feel). This effort was necessary to better enable the Society to exploit mobile computing industry trends, while improving our Email security and Website responsiveness. All at a reduced monthly cost!



We are now using a CyberChimps Responsive Theme tailored to display Blog, Business and eCommerce Sites on Smartphones, Tablets and Laptops.

OUR “REPUTATION MANAGEMENT” MARKETING KICK-OFF

HELP THE SOCIETY LEVERAGE OUR SOCIAL MEDIA MARKETING EFFORTS

WRITE AN ONLINE REVIEW

ONLINE REVIEWS HAVE FAR MORE MARKETING IMPACT THAN FACEBOOK LIKES

“STARFISH-REVIEW” MAKE THIS EASY FOR YOU TO DO

WITH A SIMPLE CLICK, PICK AN ONLINE PLATFORM (GOOGLE, FACEBOOK, WORDPRESS, YELP) YOU ARE IMMEDIATELY TAKEN TO THE APPROPRIATE ONLINE REVIEW PAGE

TRY IT - CLICK HERE

CABIN BOOK & MEDIA CLUB / BEN FRANKLIN CIRCLE

Our Cabin Book & Media Club has grown to over 20 members who share a love of reading and literary endeavors. Read our selection, join us for a lively and challenging book discussion, with wine and hors d’oeuvres!

OUR UPCOMING BOOK CLUB / MEDIA EVENTS

TUESDAY, SEPTEMBER 17TH AT 3:30PM

“THE ISLAND OF SEA WOMEN” BY LISA SEE

TO JOIN, CONTACT KERRY CARTER AT 267-973-8143



SUBSCRIBE TO OUR MONTHLY EMAIL NEWSLETTER

LEARN ABOUT THE BEN FRANKLIN SOCIETY

JOIN THE SOCIETY

BOOK A COMPANY OR GROUP MEETING AT THE CABIN

BEN FRANKLIN SOCIETY-PRODUCED VIDEO LINKS



[Lynch Creek Farm Cabin Tour](#)

[BreadWorks Tomato Pie with Bob Radcliffe](#)

[Colonial Hearth Day - 2014](#)

[Peggy’s Hearth & Garden - 2015](#)

[Peggy’s Colonial Kitchen Garden - UNC-TV](#)

Ben Franklin Society NEWS

ON THE WEB: “WWW.BENFRANKLINSOCIETYNC.ORG” ON FACEBOOK AS: “BEN FRANKLIN SOCIETY” AND “LYNCH CREEK FARM”

THE KUMMELWECK STORY

I baked 8-dozen Kummelweck Rolls for the Thomas Family Reunion . . .

Michael J Thomas writes **August 6, 2019 at 10:02 am**

My family is originally from western NY and love Roast Beef on Weck. This local delight ranks right up there with Buffalo Wings. We recently had a family reunion in North Carolina and as a tradition we have one dinner during the week featuring Roast Beef on Weck. We could not transport the bread because it would have been stale by the day of the dinner. I contacted many bakeries in NC area and no one had these type of rolls. Bob had never heard of Kummelweck Rolls before but was willing to try and make them. He did try a few recipes and the final result was amazing! Everyone raved about them – They were better than the rolls we bought back in NY. It was a great dinner thanks in a large part to the rolls Bob made. I hope you get to try them and I know if you do you will be coming back for more.

. . . and this experience prompted me to introduce them as a new Product!

Read Bob's Kummelweck Story

Peter Reinhart has posted Part 1-of-2 of an Article Bob has written about his Kummelweck Roll Story.

Visit www.pizzaquest.com

Leave a Comment/Review

SUPPORT OUR PICK-UP SITE VENDORS

Mike at ***The Depot Gifts & More in Henderson***

Paige at ***Blue Collie Coffee in Louisburg***

Amy at ***The Burnt Barrel***
(formerly ***Wine&Beer101 in Youngsville***)

David at ***The Grain Mill Cooperative in Wake Forest***

You can always arrange to Pick-Up Your Order at the
Lynch Creek Farm Cabin

Our "**SITES**" Menu provides all the Pick-Up information you need: Google Map directions, Site address, hours of business, contact person and telephone number

SEPT 2019 SCHEDULE

PICK-UP DAY - THURSDAY THE 12TH

WWW.LYNCHCREEK.COM/STORE

ORDER ONLINE NOW THRU SEPT 9TH

INTRODUCE OUR BREADS TO YOUR FRIENDS

ADD A FRIEND TO OUR MAIL LIST - SHARE OUR POSTS ON FACEBOOK

CONTACT US

CALL/TEXT: 252-767-1167

EMAIL: BAKERY@LYNCHCREEK.COM

TO RECEIVE BAKERY SCHEDULE NOTICES

• **SUBSCRIBE** to receive our monthly "Lynch Creek Farm NEWS" Email Newsletter

• **VISIT** our Bakery Home Page each month for Complete Details



Lynch Creek Farm BAKERY

ON THE WEB: "WWW.LYNCHCREEK.COM/STORE"

ON FACEBOOK AS: "BAKERY AT LYNCH CREEK FARM"



Lynch Creek Farm NEWS

CHARITABLE • TAX EXEMPT • NON-PROFIT • CORPORATION
WITH EDUCATIONAL, CULTURAL AND ECONOMIC DEVELOPMENT FOCUS

BEN FRANKLIN SOCIETY
PROJECT REPORTS

SEPT 2019

GRIST MILL INVENTORY PROJECT

Bob Radcliffe has re-activated this Ben Franklin Society (BFS) Project and is seeking Volunteers to help with Field Inventory and NC Archive Report Preparation and Filing

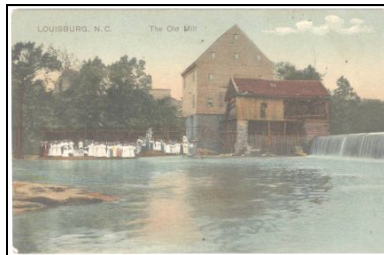
Preparatory work began in December 2018, with a visit to NCDCCR in Raleigh, to meet new Archaeology Site Registrar, Rosie Blewitt-Golsch. A Prototype Mill Site filing process has been developed that now enables us to proceed and finally accomplish the goals of this Project that Bob started in 2008.

We successfully completed our first Archaeological Site Filing on December 11TH, 2018. The **WHITAKER MILL on Lynch Creek** was assigned the **OSA-ID 31FK165**. Each Site is assigned a permanent Site-ID by the OSA Site Registrar.

As we complete and submit each Final Site Report, we will post redacted PDF versions on our BFS website.

We encourage you to download and review these Site Reports. Learn about the history of your Community.

Our March Field Trips netted missing GPS Coordinates and Photography, so that additional Site Reports could be finalized. Contact Bob Radcliffe to register for the Field Trip you want to attend. We will gather at the Lynch Creek Farm Cabin for a quick orientation before departing for 3-hours.



FIELD TRIP SCHEDULE

By Appointment until Fall

Contact: Bob Radcliffe at 252-767-1167

GRIST MILL INVENTORY SITE REPORT STATUS

<u>SITE REPORT (ALPHABETIC ORDER)</u>	<u>OSA-ID</u>	<u>STATUS</u>
DYKING CHANNELIZATION of Lynch Creek	31FK176	<u>COMPLETED</u>
EDWARDS MILL on Eaves Creek trib. of Lynch Creek	31FK177	IN-PROCESS
GILL MILL on Lynch Creek	31FK178	<u>COMPLETED</u>
INDIAN GRINDING HOLES on Lynch Creek	31FK179	<u>COMPLETED</u>
INDIAN VILLAGE/MOUND nr. Lynch Creek at Tar River	31FK180	<u>COMPLETED</u>
LETHA abandoned town nr. Whitaker Mill on Lynch Creek	31FK184	<u>COMPLETED</u>
LOUISBURG MILL on Tar River	31FK181	<u>COMPLETED</u>
QUARRY nr. Whitaker Mill	31FK182	<u>COMPLETED</u>
STONE HOUSE in Rocky Ford nr. Gill Mill	31FK183	IN-PROCESS
WHITAKER MILL on Lynch Creek	31FK165	<u>COMPLETED</u>

COMPLETED SITE REPORTS IN PDF-FORMAT ARE POSTED AT WWW.BENFRANKLINSOCIETYNC.ORG

(NAVIGATE TO THE PROJECTS / GRIST MILL INVENTORY MENU TO DOWNLOAD A COPY OR USE EMBEDDED-LINKS ABOVE)

Ben Franklin Society SERVICE PROJECT REPORT

ON THE WEB: "WWW.BENFRANKLINSOCIETYNC.ORG" ON FACEBOOK AS: "BEN FRANKLIN SOCIETY" AND "LYNCH CREEK FARM"



Lynch Creek Farm NEWS

CHARITABLE • TAX EXEMPT • NON-PROFIT • CORPORATION
WITH EDUCATIONAL, CULTURAL AND ECONOMIC DEVELOPMENT FOCUS

BEN FRANKLIN SOCIETY
MEMBERSHIP

SEPT 2019



SINCE 2008, MEMBERSHIP DUES, AND THESE
ADDITIONAL FUND-RAISING ACTIVITIES . .
BREADWORKS DINING AND ENTERTAINMENT EVENTS
GROUP AND CORPORATE CABIN BUSINESS MEETINGS
FLEA MARKET AND BENEFIT CONCERTS
INDIVIDUAL DONATIONS
GRANT WRITING
JOIN THE BEN FRANKLIN SOCIETY TODAY!

SOCIETY MEMBERSHIP DRIVE EVERYONE IS WELCOME



WE NOW PROVIDE ONLINE MEMBERSHIP RENEWAL.
IT'S EASY AND FAST - JUST CLICK ON THE FOLLOWING LINK

JOIN OR RENEW MY 2019 SOCIETY MEMBERSHIP!

**RENEW
ONLINE
NOW!**

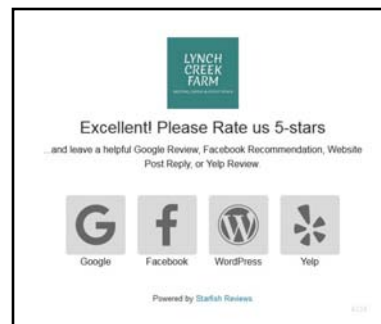
YOUR ANNUAL DUES, DONATIONS, AND ATTENDANCE AT BREADWORKS
EVENTS FUND OUR COMMUNITY PROJECTS

SUBSCRIBE A FRIEND TO OUR FREE NEWSLETTER!

WRITE a SOCIAL MEDIA ONLINE REVIEW
"STARFISH-REVIEW" TECHNOLOGY MAKES IT EASY



CLICK ON YOUR CHOICE . .



. . THEN SELECT A PLATFORM

Ben Franklin Society MEMBERSHIP

ON THE WEB: "WWW.BENFRANKLINSOCIETYNC.ORG" ON FACEBOOK AS: "BEN FRANKLIN SOCIETY" AND "LYNCH CREEK FARM"

Lynch Creek Farm NEWS

"PHILADELPHIA STYLE WITH CAROLINA CHARACTER"

URBAN ELEGANCE • RURAL CHARM • SUSTAINABLE AND ORGANIC FOODS



LYNCH CREEK FARM CABIN

CLICK IMAGE TO GOOGLE MY BUSINESS

WELCOME TO LYNCH CREEK FARM
AN EXCEPTIONAL BUSINESS MEETING, DINING AND
ENTERTAINMENT VENUE RECOGNIZED BY THE
RALEIGH NEWS & OBSERVER (N&O) AS THE
"BEST KEPT SECRET IN FRANKLIN COUNTY"

OUR AUTHENTIC LOG CABIN PROVIDES WHAT
PROPRIETOR BOB RADCLIFFE CALLS
"PHILADELPHIA STYLE WITH CAROLINA CHARACTER"

THE CABIN BACK PORCH EXTENDS DINING SERVICE
INTO THE TREETOPS, WHILE THE FRONT PORCH
SEASONALLY FEATURES LIVE ENTERTAINMENT

LYNCH CREEK FARM LOG CABIN EVENT VENUE



BUSINESS MEETINGS
IN A RURAL SETTING
WITH URBAN CONVENIENCES



PHILADELPHIA STYLE WITH CAROLINA CHARACTER

CLICK IMAGE TO DOWNLOAD
LCF TRI-FOLD BROCHURE

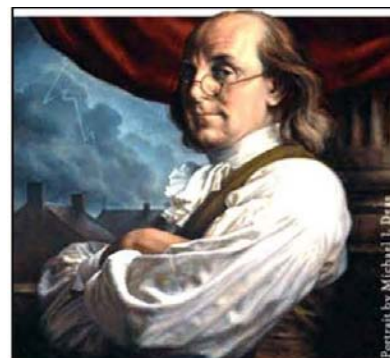
MAKE A RESERVATION AND COME SEE
FOR YOURSELF, THEN BOOK A BUSINESS
OR GROUP MEETING AT THE CABIN OR
PLAN AN OUTDOOR EVENT ON THE CABIN
GROUNDS

BOB FOUNDED OUR NON-PROFIT,
COMMUNITY SERVICE PARTNER,
BEN FRANKLIN SOCIETY
"TO ENHANCE THE EDUCATIONAL,
CULTURAL AND ECONOMIC DEVELOPMENT
OF FRANKLIN COUNTY
BY LEVERAGING ITS NATURAL AND
HISTORIC RESOURCES"

ALL EVENTS RAISE FUNDS TO SUPPORT
THE BEN FRANKLIN SOCIETY

CONTACT BOB RADCLIFFE TO SCHEDULE
A SITE VISIT

CALL/TEXT: 252-767-1167
EMAIL: BOB@LYNCHCREEK.COM



A charitable, tax-exempt
corporation that performs
independent and
collaborative projects to
enhance the educational,
cultural and economic
development of Franklin
County by leveraging its
natural and historical
resources

CLICK IMAGE TO DOWNLOAD
BFS TRI-FOLD BROCHURE

Lynch Creek Farm MEETING • DINING • EVENT VENUE

ON THE WEB: "WWW.LYNCHCREEK.COM" AND "LYNCH-CREEK-FARM.BUSINESS.SITE" ON FACEBOOK AS: "LYNCH CREEK FARM"



Lynch Creek Farm NEWS

CHARITABLE • TAX EXEMPT • NON-PROFIT • CORPORATION
WITH EDUCATIONAL, CULTURAL AND ECONOMIC DEVELOPMENT FOCUS

BEN FRANKLIN SOCIETY
AFFILIATED GROUPS

SEPT 2019


The Franklin County
ARTS Council
www.FCACArts.org

 **Perry Memorial Library**
www.PerryLibrary.org

Cedar Cross Retreat Center
www.CedarCrossRetreat.org

The Performing Arts Center

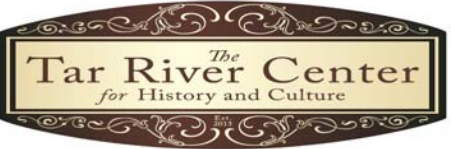
McGREGOR Hall

 **American Wine Society**
North Wake Chapter

 **THE BURNT BARREL**
YOUNGVILLE, NC
WINE SHOP, BEER STORE, BEER BAR
www.Facebook.com/BurntBarrelNC


Wake Forest Camera Club
www.wfccnc.org

Capital City Camera Club
Raleigh, NC
www.capcitycameraclub.com


The Tar River Center
for History and Culture

House & Garden Club
Henderson, NC

CAKES BY TRACEY
315 Dabney Drive
Henderson, NC
CALL 301-751-4870

 **ROIREVOLUTION®**

 **WWW.GRAINMILL.COOP**
Open to the public
Members save 10%
No minimum order

**Friends of H. Leslie Perry
Memorial Library**
www.perrylibrary.org/friendsoflibrary.html

Wake Forest Garden Club
Wake Forest, NC

N.C.C.A.R - Joel Lane Society
Children of American Revolution
Raleigh, NC


UnionBank
EVERY DAY BETTER

LOUISBURG COLLEGE
www.louisburg.edu

Twilight Gardeners Club
Henderson, NC

Indoor-Outdoor Garden Club
Henderson, NC

**ALSTON-PLEASANTS
POST-GRADUATE SCHOLARS FUND**
www.alstonpleasants.org


BLUE-COLLIE COFFEE - LOUISBURG, NC

CCB
CITIZENS COMMUNITY BANK
You'll love banking here!
www.ccb-site.com

Roxboro Garden Club
Roxboro, NC


Granville Garden Club
Oxford, NC

First Baptist Church
Henderson, NC


THE M DEPOT
GIFTS & MORE
Henderson, NC 252-430-7771

 **PERSON PLACE
Preservation
Society**

WOODLAND GARDEN CLUB
HENDERSON, NC

 **HOUSE CONCERTS**
Lisa & Joel Wolf
Youngville, NC
919-556-5068